

ECHO EDUCATION TECHNOLOGY

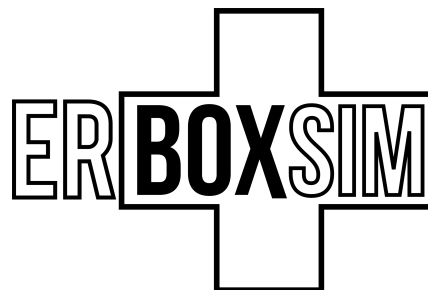
EDUCATION POWERED BY INNOVATION

ERBoxSim AMBULANCE SIMULATOR



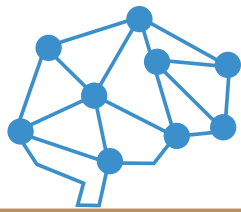
What is ERBoxSim?

- ✓ ERBoxSim is the world's only ambulance simulator with full front and back hydraulics, allowing cohesive driver and paramedic simulations with motion and vibration.
- ✓ ERBoxSim provides revolutionary immersive training for drivers and paramedics in simulated conditions, including radical weather, poor road conditions, and an array of traffic scenarios.
- ✓ ERBoxSim improves patient outcomes by providing the most realistic ambulance training using fully operational equipment.



REACH OUT NOW FOR PRICING AND INFORMATION





ECHO EDUCATION TECHNOLOGY

EDUCATION POWERED BY INNOVATION

ERBoxSim AMBULANCE SIMULATOR

KEY FEATURES:

- ✓ Full aluminum ambulance construction
- ✓ Custom interior + exterior wrap
- ✓ Full hydraulic system with full motion
- ✓ Real-time driving simulator
- ✓ 3 simulated monitor screens
- ✓ Driving scenarios using local streets
- ✓ Instructor-led, software-driven scenarios
- ✓ Squad bench + attendant seat
- ✓ Division with passage
- ✓ Stretcher anchor
- ✓ Slip-resistant and bacteriostatic flooring
- ✓ Standard medical cabinet
- ✓ Full temperature control
- ✓ Programmable LED lights + variable intensity
- ✓ 110 to 12 volt 1,000 watts converter
- ✓ 12 volt batteries (4)
- ✓ Fully functioning electrical outlets
- ✓ Whelen LED lights + surround sound
- ✓ Oxygen outlets (2)
- ✓ 50 PSI oxygen regulator
- ✓ Intercode communications system
- ✓ Central suction system

THE WORLD'S ONLY COMPLETE HYDRAULIC AMBULANCE SIMULATOR!



AVAILABLE AS A MOBILE SOLUTION!

REACH OUT NOW FOR PRICING AND INFORMATION

