

7-SIGMA Full Torso Airway Trainers



What is the 7-SIGMA Full Torso Airway Trainer?

- ✓ The Full Torso Trainer is an innovative, highly realistic trainer for intubation & airway management
- ✓ The 7S³ airway trainer replicates the appearance, weight and biomechanics of a human
- ✓ The unique modular design offers swappable anatomy and pathology based on age, gender, BMI & ethnicity and allows for easy cleaning and maintenance

KEY FEATURES:

- Accepts all intubation tools
- Supports both oral and nasal intubation
- Developed with anatomical accuracy, tissue mechanical response and haptic feedback
- Full range of motion of head and neck: 40 degrees left and right of center and full tilt to the "Sniff" position
- Realistic mass distribution reinforces proper patient positioning techniques
- Supports confirmation of intubation via auscultation and chest excursion
- Accurate simulation of common intubation errors such as right mainstem intubation and esophageal intubation

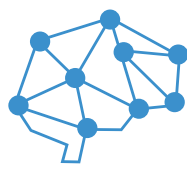


7-SIGMA Simulation Systems

REACH OUT NOW FOR PRICING AND INFORMATION

Ask for Promo Code: ECHO



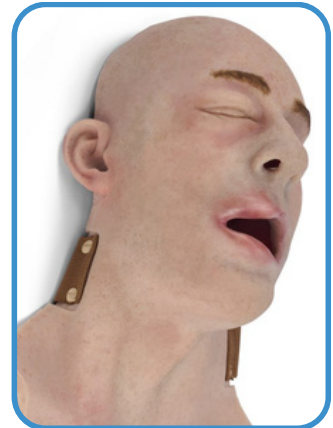


7-SIGMA Full Torso Airway Trainers

Available Options:

African American & Caucasian skin tones available

- ▶ **Intermediate** Full Torso Airway Trainer
- ▶ **Advanced** Full Torso Airway Trainer
- ▶ **Burn Victim Skills** Full Torso Airway Trainer
- ▶ **Swollen Victim Skills** Full Torso Airway Trainer



What's Included?

- ✓ The full torso is comprised of the chest, lungs, base plate, face skin and front skull
- ✓ The airway components include the airway, upper & lower teeth, jaw, nose block and lungs.
- ✓ A modular design allowing for interchangeable & replaceable parts



Additions

Replacement Airways

Airways and face skins are interchangeable and replaceable within your skills trainer, allowing a cost-effective solution for multiple types of airway simulations for your training program.



Face Skins

Carrying Case

Roto-molded for strength and durability, airtight and waterproof with solid stainless steel components, allowing for optimal storage and shipping conditions for your trainers.



REACH OUT NOW FOR PRICING AND INFORMATION

Ask for Promo Code: ECHO